



**ROBINSONS LAND
CORPORATION**

SUSTAINABILITY SUMMARY CY2020

CONTENTS

1. Sustainability Framework
2. Environment Section
3. Social Section
4. Governance Section
5. UN SDG Contributions

Contact Us:

Investor Relations

+63 2 8397 0334

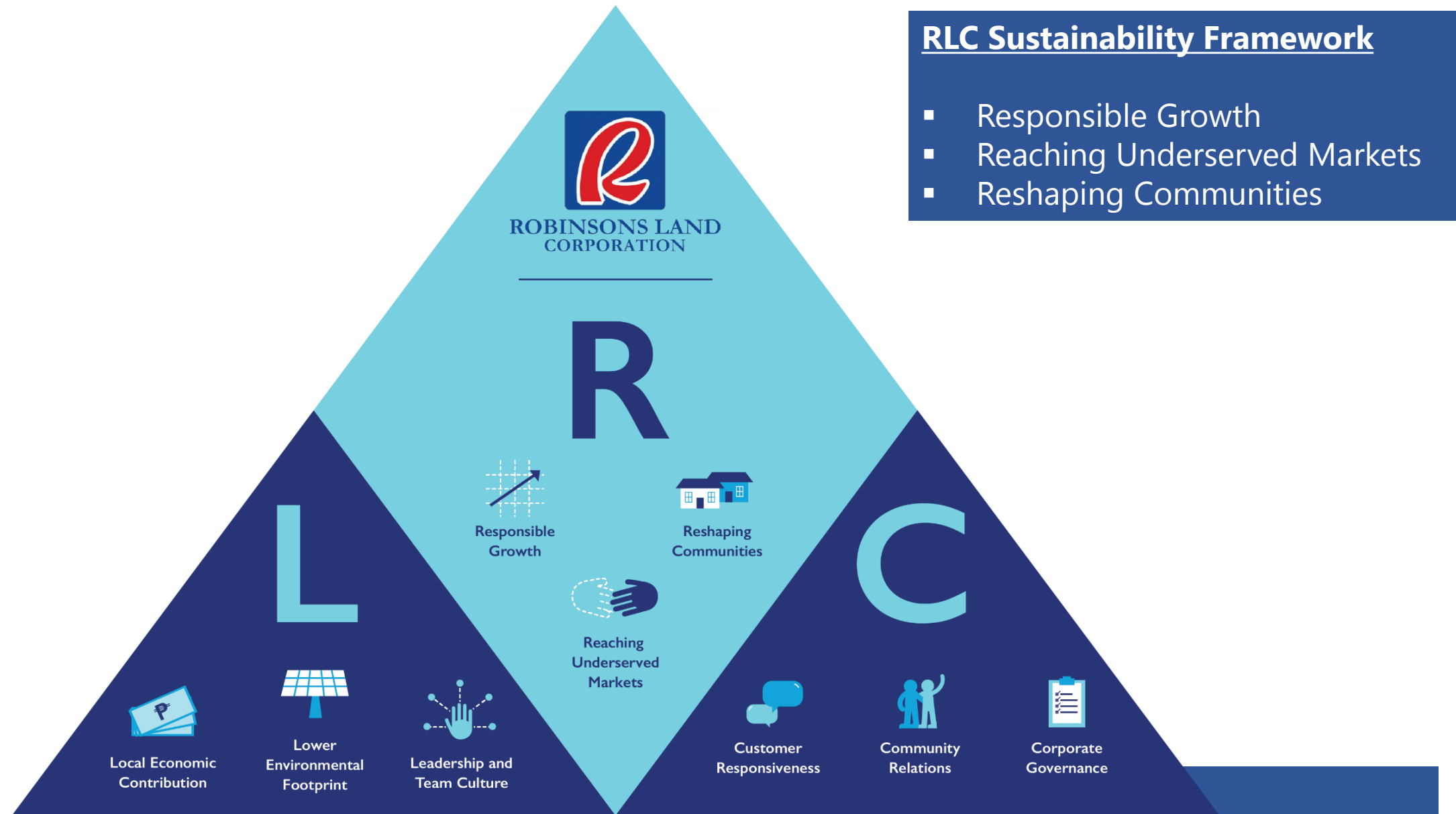
investor.relations@robinsonsland.com

<https://www.robinsonsland.com/sustainability2018/>



SUSTAINABILITY & CORPORATE SOCIAL RESPONSIBILITY

RLC SUSTAINABILITY STRATEGY



SUSTAINABILITY: ENVIRONMENT SECTION

| Disclosure | CY2020 Data |
|---------------------------------------|---------------------------------|
| Energy | 1,390 TJ |
| • Electricity | 1,274 TJ |
| • Fossil fuel | 32 TJ |
| • Renewable | 83 TJ |
| GHG Emissions | 254,232 tCO₂e |
| • Scope 1 | 0.9 % |
| • Scope 2 | 99.1 % |
| Water withdrawal | 3,831,997 cu.m |
| Water consumption | 3,194,276 cu.m |
| Water recycled or reused | 14,835 cu.m |
| Solid waste generated | 9,774,972 MT |
| Materials used in construction | |
| • Cement | 73,990 MT |
| • Glass | 149 MT |
| • Rebars | 23,328 MT |

RLC is committed to protect the environment from the adverse effects of carbon emissions and to **reduce its environmental footprint**. The Company aims to be an industry leader in efficient energy use.



Robinsons Place Ormoc is one of the 21 malls with Solar Energy



21 malls have solar power with capacity of 25.941MWp



equivalent to 270,268 trees planted



equivalent to 16,345 tons carbon dioxide avoided



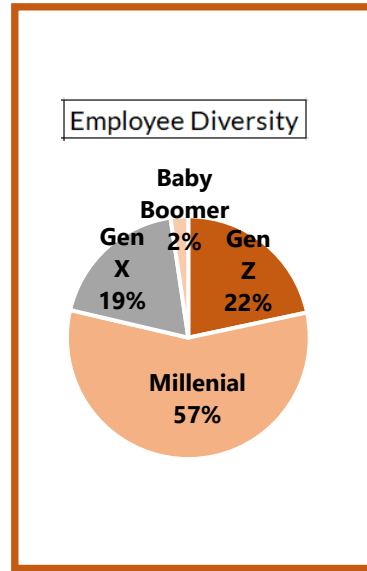
Savings of Php210 million

HIGHLIGHTS

- Additional 7.1 MW Capacity of newly operational 18,554 solar panels in RLC
- RLC's partnership with USAID on Solid Waste Management in a pilot with 2 malls resulting to improved waste segregation and maximization of circularity opportunities specially on plastics. This ensures less contribution of waste to the landfill.

SUSTAINABILITY: SOCIAL SECTION

| Disclosure | CY2020 Data |
|-----------------------------------|--------------|
| Employee headcount | 2,132 |
| • Male to Female Ratio | 2:3 |
| Employees from vulnerable sectors | 75 |
| Attrition rate | 13% |
| Employee promotions | 54 |
| Safe man hours | 4,580,216 |
| Relief Operations | 62 |
| CSR Beneficiaries Reached | 9,610 |



COMMUNITY SERVICE

- Community projects include the **Lingkod Pinoy**, Transport Hubs, Locally Sourced, COVID-19 relief, Calamity relief and Solid Waste Management, Hunger Relief, Livelihood & Education Programs.
- RLC has its own non-stock & non-profit organization called **Robinsons Land Foundation Inc** that administers its social welfare programs (supporting disaster response, community development & social involvement, health & nutrition and child welfare & education) and its environment sustainability programs.



RP Tuguegarao distributed relief goods during Typhoon Pepito & Quinta hit the Province of Cagayan.

HIGHLIGHTS

- Bloomberg Gender Equality Index Recognition
- Online Training Modules for Employees
- Food packs were distributed for Employees who reported to work during ECQ
- RLC Employees received Health Kits (included: Alcohol; gloves; masks; face shield; all-purpose cleaner)
- Front-line Covid Incentive to those who reported to work during ECQ per day: PHP500 for Managerial; PHP250 for Associates
- RHR-Working-on-the-Go and Just-Got-Home Accommodations
- 17 of the 52 malls will be used as vaccination site

In 2021



SUSTAINABILITY: GOVERNANCE SECTION

| Disclosure | CY2020 Data |
|--|---|
| # of employees to whom the anti-corruption policies have been communicated to | 2,044 |
| # of directors, management and employees that have received anti-corruption training | 2,054 |
| Incidents of Corruption | 0 |
| Legal actions or employee grievances involving forced or child labor | 0 |
| Percentage of directors' attendance during all board meetings | 100 |
| # of executive director/s who serve in more than two boards of listed companies outside of the group | 0 |
| Company has a transparent and specific dividend policy | Robinsons Land Corporation shall implement an annual cash dividend payout ratio of at least twenty percent (20%) of its recurring net income for the preceding fiscal year. |

Key Board Committees are headed by Independent Directors.

| AUDIT COMMITTEE | |
|-----------------|------------------------|
| Chairman | Independent Director |
| Member | Independent Director |
| Member | Independent Director |
| Member | Non-Executive Director |

| RISK OVERSIGHT COMMITTEE | |
|--------------------------|----------------------|
| Chairman | Independent Director |
| Member | Independent Director |
| Member | Independent Director |
| Member | Executive |

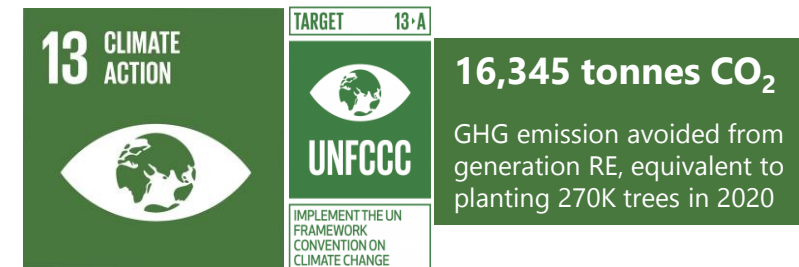
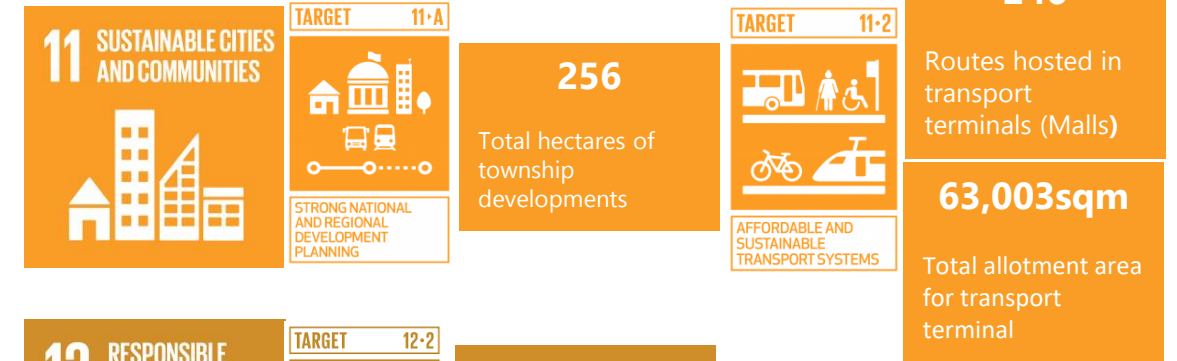
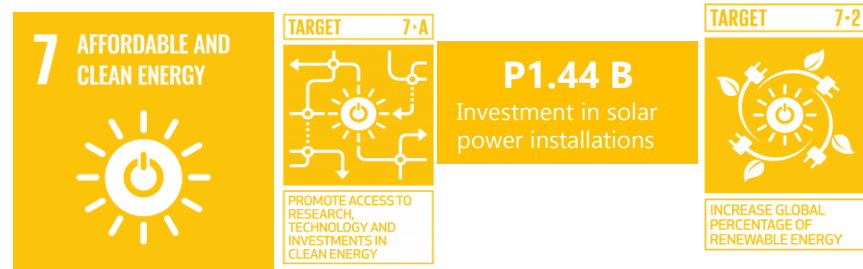
| CORPORATE GOVERNANCE COMMITTEE | |
|--------------------------------|----------------------|
| Chairman | Independent Director |
| Member | Independent Director |
| Member | Independent Director |

| RELATED PARTY TRANSACTION COMMITTEE | |
|-------------------------------------|----------------------|
| Chairman | Independent Director |
| Member | Independent Director |
| Member | Independent Director |

- ❖ Every year, RLC is being evaluated by SEC in its Integrated Annual Corporate Governance Report, whereas RLC has been assessed as compliant.
- ❖ RLC has an Enterprise Risk Management Group responsible for the execution of the enterprise risk management framework.
- ❖ Internal Audit reports ratings and results of issue remediation, which are now embedded in the scorecards of each business unit head.

Source: <https://www.robinsonsland.com/investor-relations-governance/>

RLC UN SDG CONTRIBUTIONS



THANK YOU